



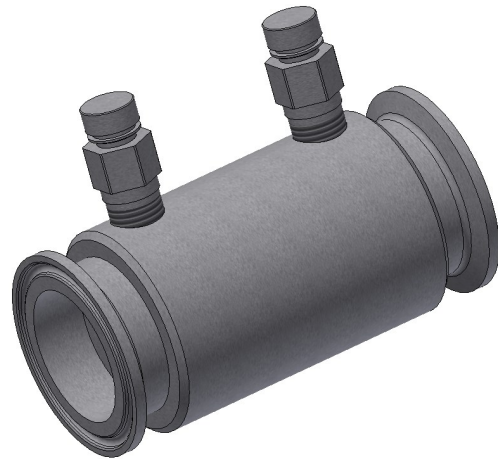
Sizes: 1-1/2" - 2"

Model: 25TC - Tri Clamp

Flowrate: 0.50 - 25.0 GPM

Standard Features:

- Pressure Rating 125 PSIG
- Operating Temperature Range 32°F to 225° F
- Differential Operating Pressure:
 - 0.50-5.00 GPM (2-80 PSID)
 - 5.50-17.0 GPM (3-80 PSID)
 - 18.0-25.0 GPM (5-80 PSID)
- $\pm 10\%$ Accuracy
- Flow Direction Indicated With Label
- Changeable GPM Flow Cartridges¹



Options:

- Pressure Temperature Port: None, Regular

Valve Sizes							
Size ^{2,3}	Flow Rate	Connection	Clamp Size	Gasket	A-Dim.	B-Dim.	C-Dim
1-1/2"	0.50-9.00 GPM	1-1/2" Tri Clamp	1-1/2"	1-1/2"	2.0	4.0	3.1
2"	9.00-25.0 GPM	2" Tri Clamp	2"	2"	2.5	4.0	3.6

¹ Special tool required to change flow rates in the field. Consult factory for more information.

² Reduced size configurations available on request.

³ 1-1/2" valve can be connected to a 1" tri clamp ferrule connection but a 1-1/2" gasket must be used.

Part	Material
Valve Body	316 Stainless Steel
O-ring	EPDM
Shim	Stainless Steel
Snap Ring	Stainless Steel
Orifice	Polyphenylsulfone
Diaphragm	EPDM
Pressure/Temp Port	316 Stainless Steel
Holder	316 Stainless Steel
Retainer	316 Stainless Steel

