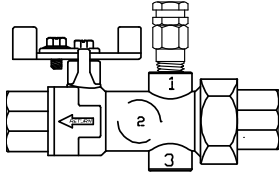




Customer Ref: _____

3-Way Hard Pipe Piping Package Quantity: ____

1. Venturi Manual Balance Valve w/ PT's & Memory Stop



*OPTIONAL EQUIPMENT TO REPLACE THE AUTOMATIC BALANCING VALVE

When using a Venturi Manual Balance Valve, the Flow Rate will still need to be entered and the Ball Valve is the standard on the supply side. The Y-ball Strainer will be an optional choice.

Automatic Temperature Control Valve Type

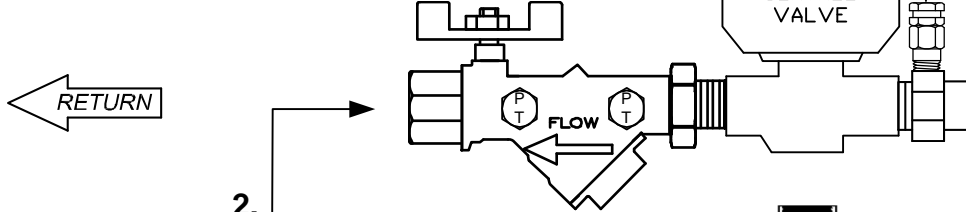
SIZE: _____

Customer Supplied (Will ship to HFC to install)
Field Supplied/Installed

Hays Supplied Options: (Pick One)

- 24V, floating 3-wire, 2 position zone valve
- 24V, 0-10 vdc proportional, 3-wire zone valve PO/PC
- 24V, 2-wire, spring return normally open
- 24V, 2-wire, spring return normally closed
- 120V, 2-wire, spring return normally open
- 120V, 2-wire, spring return normally closed

1. Automatic Balancing Valve w/ PT's



Building PPG Connection Type

- Male NPT
- Female SWT
- Female NPT
- International Size

SIZE: _____

3. Flow Rate: _____ GPM

FSWT Adapters for the by-pass

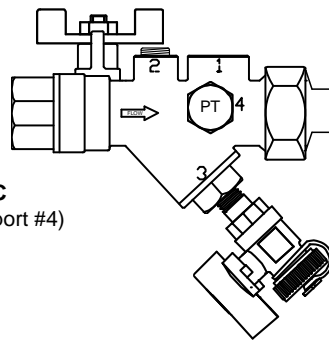
Coil PPG Connection Type

- Male NPT
- Female SWT
- Female NPT
- International Size

SIZE: _____

COIL

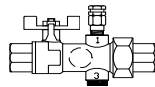
7. Y-ball Strainer w/PT & BDVHC
(Standard - PT located in side port #4)



7. Optional Equipment:

Ball Valve w/PT & Union End

(Replaces Y-Ball Strainer w/blow down valve & hose connector)



Lever Handles Optional on smaller sizes/Standard on 1 1/4 size & up.

Manual Air Vent Optional on Return Coil Connection

Ext. Kit A. Optional Extended Handles and Extended PT's

Ext. Kit B. Optional Extended Handles, Extended PT's and Manual AV Ext.

Stainless Steel Tag Kit

Additional Notes:

Tagging Info:

- IMPORTANT: HAYS FLUID CONTROLS CANNOT GUARANTEE THAT ALL PIPING PACKAGES FIT WITHIN THE CONFINES OF A SPECIFIC INSTALLATION AREA.
- ALL HAYS PIPING PACKAGES ARE ASSEMBLED AND LEAK TESTED