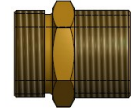
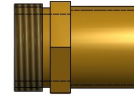
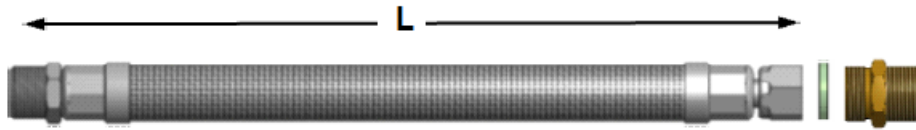




Sizes: 1/2", 3/4", 1" & 1-1/4"

Lengths: 12", 18", 24", 36", & 48"

Type: Stainless Steel Braided Flexible Hose



Choose Standard Fittings for the swivel connections: NPSM x FSWT , NPSM x FNPT or NPSM x MNPT.

Hays braided hose is designed to be used on Commercial HVAC Systems where system pressures require heavy duty hose that withstands years of fluctuating and extreme pressure situations. The braiding also limits the hose from crimping, which reduces flow and impairs the function of the coil. The swivel threads are NPSM thread, therefore require an adapter & gasket. The adapters available are FNPT, MNPT or FSWT. These are available with or without a port. When choosing the adapter with the port, you must order a Pressure Temperature Port, Pressure Tap, Manual Air Vent or Blow-down valve to fill the port. Consult the factory for additional components to be used in the port. Custom hose lengths are also available.

Material Specifications:

- **Liner:** Reinforced EPDM
- **Cover:** Stainless Steel Braid
- **Ferrules:** 300 Stainless Steel
- **Connections:** Brass

Specifications:

- **Approximate O.D. (Outside Diameter):** 1/2" (.70), 3/4" (0.97), 1" (1.30), 1-1/4" (1.64)
- **Maximum Working Pressure:** 1/2" - 1-1/4" (400 psi)
- **Minimum Burst Pressure:** Four (4) Times the Working Pressure (1600 psi)
- **Temperature Rating:** 1/2" - 1-1/4" (-40° F to 260° F)
- **Bend Radius:** 1/2" (2.0 Inches), 3/4" (3.5 Inches), 1" (5.0 Inches), 1-1/4" (6.0 Inches)
- **Hose Connectors:** Permanently Crimped
- **Swivels:** Use Self Actuating Fiber Gaskets
- **Threads:** National Pipe Threads per ANSI B1.20.3 Type 1 Class 1
- **Connectors:** Brass UNSC36000

Dimension equals overall length of the hose from the Male Fixed end to the end of the Swivel attachment. Hose pictured above includes the BP swivel and gasket and BP x MNPT adapter.